



**Migrating from AAIA Legacy to  
ACES**

**Presented by Solenium Group**

Most of us have had the pleasure of migrating from one catalog standard to another.

And if you haven't yet, you almost certainly will!

The **Sunset Date for the AAIA Legacy Vehicle Table** follows closely to the end of the Mayan calendar (**December 2012**). Coincidence?

I think not. and while developing a project of this magnitude may seem like the end of the world, the end result will be well worth it.

**As some of us have seen, using a conversion process to export Legacy data to produce ACES can be time consuming and not always representative of your source data. So really, what better way is there to create a catalog that truly represents your source data without becoming totally ACES native?**

.... Brian Griffin III, IMC, ACES : A Case Study, Aftermarket Insider, April 2010



Perhaps many of you have only had the pleasure of migrating your data to the AAIA Legacy Standard.

Now, you are faced with a larger challenge ... Migrating to AAIA's ACES Standard. In a recent survey of AAIA Subscribers about **40%** of the respondents indicated they were in some phase of migrating from Legacy to ACES

Today, we will help to prepare you to begin this journey. You will learn some best practices, tips and techniques to do the job right.

## **Our Presenters ...**

Brian Griffin III, Head of Catalog Management, IMC

Chris Nierintz, Director, Business Development, Solenium Group

Claudio Di Sano, President, Solenium Group

Steven Raposo, Senior Product Manager, Solenium Group



## AAIA LEGACY VEHICLE TABLE

The Legacy standard provided great visibility for:

Vehicle (5 Attributes) - Year, Make, Model, Submodel & Region

Engine (9 Attributes) – Type/Cylinder, Displacement in Liters, Cubic Centimeters & Cubic Inches, Fuel Type, Fuel Delivery, Aspiration, Vin & Designation.

The Legacy standard nuances:

Does not provide visibility for other vehicle attributes. (ie. DriveType)

Does not allow for Basic Cataloging of Make, Model, Year values for model driven product lines (ie. Wipers)

Does not allow for Basic Cataloging of Make, Model, Year and selected engine attribute value(s) for engine driven product lines (ie. Waterpumps)

The nature of the legacy standard caused significant overpopulation vehicle / engine attributes for many catalog producers.



## ACES BENEFITS

Provides mechanisms to produce concise (not over populated) electronic information.

Provides accurate vehicle configuration information beyond that which was provided in Legacy. (VCdb)

Provides accurate part configuration information. (Position / Part Type – PCdb)

Provides a facility to standardize fitment information beyond those that are defined as Aces attributes. (Qdb)

Provides a facility to deliver standardized Brand information. (Brand Table)



# LEGACY TO ACES CONVERSION

A Migration Path ...



... IMC : An inside look at their journey.



## IMC's Roadmap to Industry Standards.

In 2005 IMC migrated away from its proprietary standard to AAIA's Legacy industry standard.

Decision based on maturity level of Legacy vs. ACES at that time.

Since then IMC has significantly expanded the depth and breadth of their application data.

Stringent disciplines and industry best practices were implemented.

IMC is now comfortable with maturity and accuracy of ACES.

IMC is currently well on their way to converting their source data to be based on the ACES standard.



## IMC's Primary Concerns & Objectives

- They wanted to retain ...
  - Applications for Vehicles not contained in ACES (MMY)
    - 2000-2004 BMW 320d - 4cyl 2.0L 1995cc 121ci 16-valve Turbo (European)
    - 2001-2005 Cadillac Deville Commercial Hearse - V8 4.6L 281ci (USA / CAN)
  - Fitment Information not defined or known by ACES (Beyond MMY)
    - 1997 Volkswagen Jetta TDI 4 Cyl 1.9L - MFI fuel system
    - 2008 Suzuki Swift 4 cyl 1.6L - Hatchback body style



# IMC's Primary Concerns & Objectives

● They wanted to retain ...

## - Sequencing of Fitment Information

- 2WD; w/ 14" Wheels; w/ 2 Wheel ABS
- 2WD; w/ 14" Wheels; w/ 4 Wheel ABS
- 4WD; w/ 15" Wheels; w/ 2 Wheel ABS; Turbo
- 4WD; w/ 15" Wheels; w/ 2 Wheel ABS; Non-Turbo
  
- E46; To 8/01; Sedan & Wagon
- E46; From 9/01; Sedan
- E46; From 9/01; Wagon; w/ A/T
- E46; From 9/01; Wagon; w/ M/T



## IMC's Primary Concerns & Objectives

- They wanted to retain ...
  - Control over Specialized Phrasing of Fitment Information
    - Cabriolet – Convertible (Body Type)
    - Bonnet – Hood (Q or Notes)
    - Boot – Trunk (Q or Notes)
    - Petrol – Gas (Fuel Type)
    - Automatic Gearbox - Automatic Transmission (Transmission Control Type)
    - Kompressor – Supercharger (Engine Aspiration)
    - Manual Trans. - Standard Trans. (Transmission Control Type)
    - A/T - Automatic Transmission (Transmission Control Type)
    - Roadster - 2 Door Convertible (Body Type, Number of Doors)
    - Front Rotor - Front Disc 9 (Brake Type)
    - Tremec 5 Speed - T5 (Transmission Mfg.)
    - High Output – HO (Engine Version)
    - Drivers Side – Left (Positional)



## IMC's Primary Concerns & Objectives

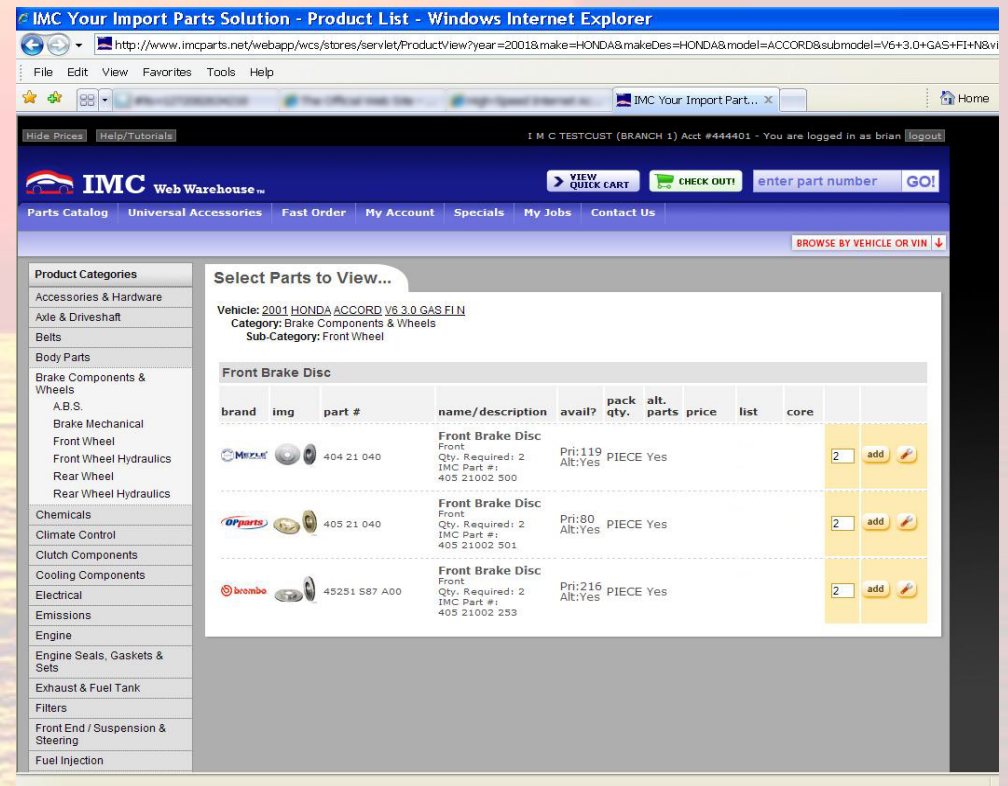
- They wanted to retain ...
  - Control over Fitment Information being published (*even if meant 'over-population' according to ACES*)
    - Warranty Information : 90 day warranty - Opening sealed container voids returning product
    - Cautionary Information : Be sure to wear safety glasses when checking battery fluid level
    - VIO information : 1 million Ford F-series in Austin Texas
    - OEM notes : Dealer installed unit is plastic
    - Product Information : NEW Part number
    - Brake Caliper product info : Please refer to the owner's manual to identify correct brake fluid
    - Suspension Strut Plate product info : The top cap determines if the strut is sealed or serviceable. Round Cap units are serviceable and Hex Caps units are sealed
  - Ability to service other e-data requirements and formats (E.G.)
    - Legacy (or Legacy Variations) : Advance, CSK, Etc
    - NAPA



# IMC's Primary Concerns & Objectives

They wanted to retain ...

- Ongoing Catalog Publication and Distribution (*Beyond E-Data*)
  - Web Catalog
  - CD / DVD Catalogs



**IMC Your Import Parts Solution - Product List - Windows Internet Explorer**

http://www.imcparts.net/webapp/wcs/stores/servlet/ProductView?year=2001&make=HONDA&makeDes=HONDA&model=ACCORD&submodel=V6+3.0+GAS+FI+N&vi

File Edit View Favorites Tools Help

IMC Your Import Part... x Home

Hide Prices Help/Tutorials I M C TESTCUST (BRANCH 1) Acct #444401 - You are logged in as brian [logout]

**IMC Web Warehouse™** VIEW QUICK CART CHECK OUT enter part number GO!

Parts Catalog Universal Accessories Fast Order My Account Specials My Jobs Contact Us

BROWSE BY VEHICLE OR VIN ↓

**Product Categories**

- Accessories & Hardware
- Axle & Driveshaft
- Belts
- Body Parts
- Brake Components & Wheels
  - A.B.S.
  - Brake Mechanical
  - Front Wheel
  - Front Wheel Hydraulics
  - Rear Wheel
  - Rear Wheel Hydraulics
- Chemicals
- Climate Control
- Clutch Components
- Cooling Components
- Electrical
- Emissions
- Engine
- Engine Seals, Gaskets & Sets
- Exhaust & Fuel Tank
- Filters
- Front End / Suspension & Steering
- Fuel Injection

**Select Parts to View...**

Vehicle: 2001 HONDA ACCORD V6 3.0 GAS FI N  
Category: Brake Components & Wheels  
Sub-Category: Front Wheel

**Front Brake Disc**

brand	img	part #	name/description	avail?	pack qty.	alt. parts	price	list	core			
Mitsumi		404 21 040	Front Brake Disc Front Qty. Required: 2 IMC Part #: 405 21002 500		Pri:119 Alt:Yes	PIECE	Yes			2	add	
Optima		405 21 040	Front Brake Disc Front Qty. Required: 2 IMC Part #: 405 21002 501		Pri:80 Alt:Yes	PIECE	Yes			2	add	
Brando		45251 587 A00	Front Brake Disc Front Qty. Required: 2 IMC Part #: 405 21002 253		Pri:216 Alt:Yes	PIECE	Yes			2	add	



# IMC's Primary Concerns & Objectives

They wanted to retain ...

- Ongoing Catalog Publication and Distribution (*Beyond E-Data*)
  - Printed Catalogs and Buyer's Guides

MAKE & MODEL			DESCRIPTION	LOC REF	PART NO.
CYL.	ENGINE SIZE	YEAR			
<b>TOYOTA</b>					
<b>4RUNNER</b>					
L4	2366 (2.4)	1992-95	Front; Rotor Only		50756
		1986-91	Front; Rotor Only		50618
		1984-85	Front; Rotor Only		50375
	2694 (2.7)	1997-00	Front; 15" Wheels; Rotor Only		50959
		1997-00	Front; 16" Wheels; Rotor Only		51214
1996		Front; 4WD, 15" Wheels; 2WD; Rotor Only		50959	
V6	2959 (3.0)	1992-95	Front; Rotor Only		50756
		1988-91	Front; Rotor Only		50618
		1996	Front; 4WD, 16" Wheels; Rotor Only		51214
	3378 (3.4)	1997-02	Front; 15" Wheels; Rotor Only		50959
		1997-02	Front; 16" Wheels; Rotor Only		51214
1996		Front; 4WD, 15" Wheels; 2WD; Rotor Only		50959	
4000 (4.0)	1996	Front; 4WD, 16" Wheels; Rotor Only		51214	
		2003-05	Front; 16" Wheels; Rotor Only		51530
		2003-05	Front; 17" Wheels; Rotor Only		51529
	2003-05	Rear; Rotor Only		51407	
		2003-05	Front; 16" Wheels; Rotor Only		51530
V8	285 (4.7)	2003-05	Front; 17" Wheels; Rotor Only		51529
		2003-05	Rear; Rotor Only		51407
		2003-05	Rear; Rotor Only		51407

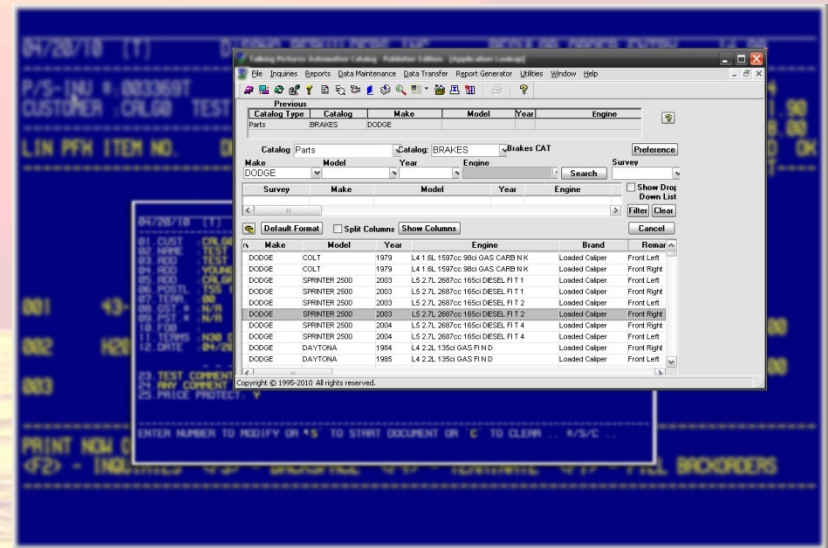
Engine	YEAR	Notes	Clutch Set	Clutch Cover	Clutch Disk	Clutch Bearing	Pilot Bearing/Bushing	Alignment Tool
<b>CHEVROLET</b>								
<b>G2500 VAN 3/4 ton</b>								
<b>6 Cylinder</b>								
4.3 262ci W L35	1998		19353	29188	39187	N-4174-SC	PB-656	TAT-5301
<b>8 Cylinder</b>								
5.0 305ci M	1998		19346	29183	39182	N-4174-SC	PB-656	TAT-5301
5.7 350ci R L31	1998	NVG 3500, NVG 4500 Trans	19347	29183	39185	N-4174-SC	PB-381	TAT-5301
6.5 395ci F L65	1998	12" Diaph Type	10188	20188	30168	N-4174-SC	PB-381	TAT-5301



# IMC's Primary Concerns & Objectives

They wanted to retain ...

- Ongoing tight integration with other systems
- Business Systems (Order Entry, etc.)
- E-Commerce Systems
- VIO Analytics
- OE Data





## IMC's Primary Concerns & Objectives

- To Q or not to Q ?
  - Decision made to defer at this time.
  - IMC continues to employ best practices to form all fitment and non-fitment information, facilitating adoption of Q in future.



**Let's Get Started ....**

**Checklist**

**Resources**

**Tools**

**Processes**



## Available / Required Resources

- ACES Subscription (AAIA)
- ACES Vehicle Configuration Database (**VCdb**)
  - Vehicles
  - Attributes
  - Vehicle Configurations (1985 & Up Only, Passenger Car & Light Truck Only)
  - Valid To's (*Back to 1896, All Vehicle Types*)
  - Legacy to ACES Bridge (*Careful !*)
  - & more ...
- ACES Part Configuration Database (**PCdb**)
- ACES Brand Table
- ACES Qualifier Database (**Qdb**)
- ACES Management Interface [www.enhancedstandard.com](http://www.enhancedstandard.com)
- ACES Documentation [www.aftermarket.org](http://www.aftermarket.org)
- ACES Sub-committee Participation



## Tools That You'll Need

### ● ACES Mapping Facility

- Ability to Identify Data Issues (*In Legacy & ACES*)
  - Exceptions Reporting (*Overlaps, Duplicates, etc*)
  - Drop Out Reporting
  - Holes Reporting

### ● ACES XML Production Facility

- Attribute Consolidation
  - User Controllable Sequencing Of Attributes
  - User Controllable Inclusion / Exclusion of Attribute
  - Application Compression

### ● XML Flattener, or Grid Style Viewer

- Sequence (With User Control)
- Phrasing / Wording (With User Control – E.G. Prefixes, Suffixes, Aliases)

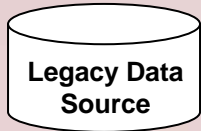


## Best Practices (Start with your Source)

- Identify & Remove Duplicates
- Identify & Remove Overlaps
- Identify /& Remove Data Over-population (*wherever possible*)
- Ensure that Data is **CONSISTENT**
  - Even Bad Practices can be corrected more easily if **CONSISTENT**

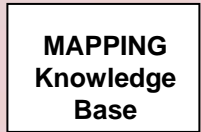


## Approach – High Level



Begin with Best Possible Legacy Data

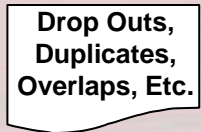
- Best Practices (High Consistency, Free of Exceptions, Etc)



MAPPING to ACES



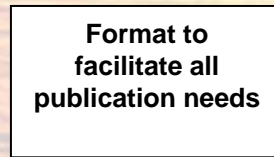
PRODUCE ACES DATA (XML?)



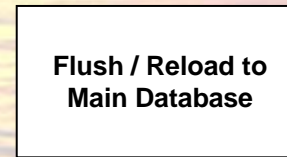
Review Exceptions



OK To Proceed?



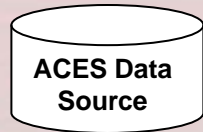
Formatting for Load to your System



LOAD



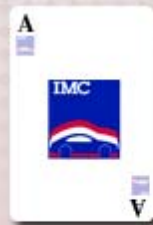
OK To Proceed?



LIVE



# ACES Mapping Considerations & Awareness



Legacy Bridge – A big time saver, but less than perfect.  
Consider the following scenario:

Brake Caliper - 1434206 2003 Dodge Grand Caravan – V6 3.8L w/Rear Disc part# - 505 1234  
Brake Caliper - 1430087 2003 Dodge Grand Caravan Sport – V6 3.8L w/Rear Disc part# - 502 7895

LEGACY									ACES										
LegacyID	Make	Model	Year	Submodel	EngType	Ltr	CC	CID	BaseVehicleID	MakeName	modelName	YearID	SubModel	EngineBaseID	Block	Cyl	Ltr	CC	CID
1434206	DODGE	GRAND CARAVAN	2003		V6	3.8		230	1899	Dodge	Grand Caravan	2003	EX	251	V	6	3.8	-	230
1434206	DODGE	GRAND CARAVAN	2003		V6	3.8		230	1899	Dodge	Grand Caravan	2003	ES	251	V	6	3.8	-	230
1432883	DODGE	GRAND CARAVAN	2003		V6	3.3		201	1899	Dodge	Grand Caravan	2003	SE	241	V	6	3.3	-	201
1422694	DODGE	GRAND CARAVAN	2003		V6	3.3		201	1899	Dodge	Grand Caravan	2003	SE	241	V	6	3.3	-	201
1422694	DODGE	GRAND CARAVAN	2003		V6	3.3		201	1899	Dodge	Grand Caravan	2003	EL	241	V	6	3.3	-	201
1422694	DODGE	GRAND CARAVAN	2003		V6	3.3		201	1899	Dodge	Grand Caravan	2003	Base	241	V	6	3.3	-	201
1430087	DODGE	GRAND CARAVAN	2003	SPORT	V6	3.8		230	1899	Dodge	Grand Caravan	2003	Sport	251	V	6	3.8	-	230
1430087	DODGE	GRAND CARAVAN	2003	SPORT	V6	3.8		230	1899	Dodge	Grand Caravan	2003	ES	251	V	6	3.8	-	230
1413155	DODGE	GRAND CARAVAN	2003	SPORT	V6	3.3		201	1899	Dodge	Grand Caravan	2003	Sport	241	V	6	3.3	-	201
1413155	DODGE	GRAND CARAVAN	2003	SPORT	V6	3.3		201	1899	Dodge	Grand Caravan	2003	ES	241	V	6	3.3	-	201
1413155	DODGE	GRAND CARAVAN	2003	SPORT	V6	3.3		201	1899	Dodge	Grand Caravan	2003	Base	241	V	6	3.3	-	201



## Legacy Bridge – Continued – Dodge Van Example

Brake Caliper - 1434206 2003 Dodge Grand Caravan – V6 3.8L w/Rear Disc part# - 505 1234  
 Brake Caliper - 1430087 2003 Dodge Grand Caravan Sport – V6 3.8L w/Rear Disc part# - 502 7895

LegacyID	Make	Model	Year	Submodel	EngType	Ltr	CC	CID		VehicleID	MakeName	ModelName	YearID	SubModel	EngBaseID	Block	Cyl	Ltr	CC	CID
1434206	DODGE	GRAND CARAVAN	2003		V6	3.8		230	BRIDGE	1899	Dodge	Grand Caravan	2003	<b>ES</b>	251	V	6	3.8	-	230
1430087	DODGE	GRAND CARAVAN	2003	<b>SPORT</b>	V6	3.8		230		1899	Dodge	Grand Caravan	2003	<b>ES</b>	251	V	6	3.8	-	230

## After Legacy to ACES bridge mapping:

output:

Brake Caliper - 1899 2003 Dodge Grand Caravan ES – V6 3.8L w/Rear Disc part# - 505 1234  
 Brake Caliper - 1899 2003 Dodge Grand Caravan ES – V6 3.8L w/Rear Disc part# - 502 7895

The mapping has caused a data exception / overlap. Reviewing of this data maybe confusing since your source data did not have contain execeptions and did not include the submodel “ES”.

Be sure you are aware of vehicle overlap mapping.



Review the vehicle tables. Consider the impact of migrating / mapping your data.

## ONE LEGACY VEHICLE MAPPING TO MANY ACES VEHICLES (bridge)

LegacyID	Make	Model	Year	Submodel		BaseVehicleID	Year	MakeName	modelName
1037315	CHEVROLET	CAPRICE	1992		BRIDGE	3146	1992	Chevrolet	Commercial Chassis
						3129	1992	Chevrolet	Caprice

**Be Aware that the data may expand to multiple Models during mapping:  
The Chevy Caprice will map to multiple models, verify if ALL your parts are intended to fit the Commercial Chassis also. Adjust your mapping accordingly.**

**Consider how you will map your data if you had noted the bodystyle “Limo”.**

-----

LegacyID	Make	Model	Year	Submodel		BaseVehicleID	Year	MakeName	modelName
1430668	FORD	E-150 ECONOLINE	2005		BRIDGE	18204	2005	Ford	E-150 Club Wagon
						18203	2005	Ford	E-150

**Be Aware that all your data mapped to the Ford E-150 will map to multiple models. Verify your fitment information and ensure you choose the correct vehicle.**

**Example: fitment note indicates “exc. Club Wagon”**

**Ensure you only map the specific record to the E-150 Club Wagon Base Vehicle ID.**



Review the vehicle tables. Consider the impact of migrating / mapping your data.

## LEGACY VEHICLE MAKE TO DIFFERENT ACES MAKE

LegacyID	Make	Model	Year	Submodel		BaseVehicleID	Year	MakeName	modelName
1226416	OPEL	ISUZU	1976		BRIDGE	18186	1976	Buick	Opel

**Be Aware that your data may have a Legacy vehicle Make / Model that is defined differently within ACES.**

**Understanding this will allow you to more easily review and identify the cause/creation of the data.**



Review the vehicle tables. Consider the impact of migrating / mapping your data.

## LEGACY VEHICLE SUBMODEL TO DIFFERENT ACES SUBMODEL (bridge)

The below example illustrates the Legacy submodel "Limited".

Legacy Submodel	Aces Submodel (Bridge)
<b>LIMITED</b>	Collector's Edition
	Estate Wagon Collector's Edition
	Gran Sport
	GT Limited
	Limited
	Limited Collector's Edition
	Limited Edition F/E
	Limited Turbo
	Olympia Limited
	Olympic Gold Edition
	Outback Limited
	T-Type

**Be Aware that your data may contain Legacy vehicles which the submodel name could be defined differently within ACES.**

**Reviewing this will allow you to easily understand and identify the differences.**



Review the vehicle tables. Consider the impact of migrating / mapping your data.

## ACES MAPPING AND THE “U/K”, “N/R”, “N/A” Attributes

Abbreviation	Description	LongDescription
<b>N/A</b>	Not Available	Indicates the attribute was researched, but no information is available at this time.
<b>N/R</b>	Not Required	Indicates the attribute is not required for the vehicle.
<b>U/K</b>	Unknown	Indicates the attribute has not been researched yet.



Review the vehicle tables. Consider the impact of migrating / mapping your data.

## ACES MAPPING AND THE “U/K”, “N/R”, “N/A” Attributes

Consider the following scenario:

2003 Acura EL 4 cylinder 1.7L w/AC; Single Overhead Cam Part# 12345

BaseVehicleID	MakeName	modelName	YearID	SubModelName	EngBaseID	BlockType	Cyl	Liter	CC	CID	CylinderHeadType	CylinderHeadTypeName
18910	Acura	EL	2005	Base	588	L	4	1.7	1668	-		SOHC
18909	Acura	EL	2004	Base	588	L	4	1.7	1668	-		SOHC
12754	Acura	EL	2003	Base	1707	L	4	1.7	1668	-		<b>U/K</b>
12753	Acura	EL	2002	Base	1707	L	4	1.7	1668	-		<b>U/K</b>
12752	Acura	EL	2001	Base	1707	L	4	1.7	1668	-		<b>U/K</b>
12751	Acura	EL	2000	Base	1706	L	4	1.6	1590	97		<b>U/K</b>
12750	Acura	EL	1999	Base	1706	L	4	1.6	1590	97		<b>U/K</b>
12749	Acura	EL	1998	Base	1706	L	4	1.6	1590	97		<b>U/K</b>
12748	Acura	EL	1997	Base	1706	L	4	1.6	1590	97		<b>U/K</b>



Review the vehicle tables. Consider the impact of migrating / mapping your data.

U/K example continued:

2003 Acura EL 4 cylinder 1.7L w/AC; Sing Overhead Cam Part# 12345

BaseVehicleID	MakeName	modelName	YearID	SubModelName	EngBaseID	BlockType	Cyl	Liter	CC	CID	CylinderHeadType	CylinderHeadTypeName
18910	Acura	EL	2005	Base	588	L	4	1.7	1668	-	SOHC	
18909	Acura	EL	2004	Base	588	L	4	1.7	1668	-	SOHC	
12754	Acura	EL	2003	Base	1707	L	4	1.7	1668	-	U/K	
12753	Acura	EL	2002	Base	1707	L	4	1.7	1668	-	U/K	
12752	Acura	EL	2001	Base	1707	L	4	1.7	1668	-	U/K	
12751	Acura	EL	2000	Base	1706	L	4	1.6	1590	97	U/K	
12750	Acura	EL	1999	Base	1706	L	4	1.6	1590	97	U/K	
12749	Acura	EL	1998	Base	1706	L	4	1.6	1590	97	U/K	
12748	Acura	EL	1997	Base	1706	L	4	1.6	1590	97	U/K	

**Be aware of the meaning of U/K. The example does not indicate the vehicle is not valid. This provision will still allow you to map the vehicle and SOHC value. (simply a place holder for now)**



Review the vehicle tables. Consider the impact of migrating / mapping your data.  
**ACES MAPPING NOT UTILIZING THE BRIDGE**

Attribute Comparison using the Legacy to Aces Bridge Feb 2010

Legacy Attribute	Total Records	Legacy <> Aces Records (not matched)	%
Year	1942-2011	0	
Make	184	1	0.5%
Model	2773	79	2.8%
Submodel	2383	1153	48.4%
Engine Type	21	0	
Liter	81	0	
CC	759	1	0.1%
Cid	322	2	0.6%
Fuel	9	0	
Fuel Delivery	2	0	
Asp	3	0	
Vin	73	3	4.1%
Desg	904	7	0.8%

**Be Aware that some Legacy attributes will not match the ACES attribute values.**



Review the vehicle tables. Consider the impact of migrating / mapping your data.

## **REGION INFORMATION & CONSOLIDATING DATA FOR SPECIFIC REGIONS**

**Ask yourself:**

**What region have you cataloged your data for? (US only, US/CA, US, ME)**

**Be sure to map your data to region specific vehicles only.**



Review the vehicle tables. Consider the impact of migrating / mapping your data.

## ACES “VALID TO” VS. “VEHICLE CONFIG” TABLES

BaseVehicleID	YearID	MakeName	modelName	rHeadType	ineBas	BlockType	Cylinders	Liter	CID	BodyTypeName	DriveTypeName	FuelTypeName
5479	1992	Ford	Mustang	OHV	143	V	8	5.0	302	Convertible	RWD	GAS
5479	1992	Ford	Mustang	OHV	143	V	8	5.0	302	Hatchback	RWD	GAS
5479	1992	Ford	Mustang	OHV	143	V	8	5.0	302	Sedan	RWD	GAS

**Be Aware the “Valid To” tables reference 1984 and older vehicles (All Vehicle Types), and the “Vehicle Config” tables reference 1985 & newer, Passenger Car & Light Truck Only vehicle types.**



# Map ALL Legacy Attributes to its respective ACES VCdb Attribute

Microsoft Excel

File Edit View Insert Format Tools Data Window Help

C14

mm\_022004.txt

	A	B	C	D	E	F	G	H	I	J	K	L	M	N	O	P	Q	R	S	T	U	V	W	X	Y
					AAIA VID	YEAR	MAKE	MODEL	SUB-MODEL	ENGINE TYPE	LITRES	CCs	CID	FUEL TYPE	FUEL DEL	ASP	VIN	ENG DESIG	COUNTRY	DATE					
1					1203275	1995	MERCURY	MYSTIQUE	YOUNG AMERICA	V6	2.5	2450	155	GAS	FI	N	L	3	UC	10/30/02					
2					1203264	1995	MERCURY	MYSTIQUE	LS	L4	2	1989	121	GAS	FI	N	L	3	UC	10/30/02					
3					1203253	1995	MERCURY	MYSTIQUE	GS	V6	2.5	2450	155	GAS	FI	N	L	3	UC	10/30/02					
4					1203242	1995	MERCURY	MYSTIQUE	GS	L4	2	1989	121	GAS	FI	N	L	3	UC	10/30/02					
5					1203310	1996	MERCURY	MYSTIQUE	LS	V6	2.5	2450	155	GAS	FI	N	L	3	UC	10/30/02					
6					1203309	1996	MERCURY	MYSTIQUE	LS	L4	2	1989	121	GAS	FI	N	L	3	UC	10/30/02					
7					1203297	1996	MERCURY	MYSTIQUE	GS	V6	2.5	2450	155	GAS	FI	N	L	3	UC	10/30/02					
8					1203286	1996	MERCURY	MYSTIQUE	GS	L4	2	1989	121	GAS	FI	N	L	3	UC	10/30/02					
9					1203376	1997	MERCURY	MYSTIQUE	LS	V6	2.5	2450	155	GAS	FI	N	L	3	UC	10/30/02					
10					1203365	1997	MERCURY	MYSTIQUE	LS	L4	2	1989	121	GAS	FI	N	L	3	UC	10/30/02					
11					1203954	1997	MERCURY	MYSTIQUE	GS	V6	2.5	2450	155	GAS	FI	N	L	3	UC	10/30/02					
12					1203343	1997	MERCURY	MYSTIQUE	GS	L4	2	1989	121	GAS	FI	N	L	3	UC	10/30/02					
13					1305256	1998	MERCURY	MYSTIQUE	LS	V6	2.5	2450	155	GAS	FI	N	L	3	UC	10/30/02					
14					1305245	1998	MERCURY	MYSTIQUE	LS	L4	2	1989	121	GAS	FI	N	L	3	UC	10/30/02					
15					1305234	1998	MERCURY	MYSTIQUE	GS	V6	2.5	2450	155	GAS	FI	N	L	3	UC	10/30/02					
16					1305223	1998	MERCURY	MYSTIQUE	GS	L4	2	1989	121	GAS	FI	N	L	3	UC	10/30/02					
17					1356544	1999	MERCURY	MYSTIQUE		V6	2.5	2450	155	GAS	FI	N	L	3	U	10/30/02					
18					1356533	1999	MERCURY	MYSTIQUE		L4	2	1989	121	GAS	FI	N	L	3	U	10/30/02					
19					1364015	2000	MERCURY	MYSTIQUE		V6	2.5	2450	155	GAS	FI	N	L	3	U	10/30/02					
20					1364004	2000	MERCURY	MYSTIQUE		L4	2	1989	121	GAS	FI	N	L	3	U	10/30/02					

Map to ACES MMY (ACES Base Vehicle)

Map to ACES (Engine Base & Engine Attributes)

Map to ACES SubModel

Map to ACES Region



## The Process Recap

- Setup Parameters for 'Special' Production of XML
- Produce Code Aces XML
- Flatten XML
- Audit
- Format for Flush / Reload of Production Systems
- Flush / Reload Production Systems - THOROUGH Testing of ALL
- Functionality and Publication Requirements
- Including Submission to & Inspection by E-Cats & Customers
- Refinements as required (Full Cycle as described above)
- LIVE – ACES Database Base



## How do I get started ?

- Ensure access to all necessary materials (ACES Subscription)
- Ensure that toolset has all of the requisite capabilities
- Evaluation and Preparation of Resources (Time, Staff, Skill set, Budget)
- Evaluation and Preparation of Toolset
  - **GOOD** – Excel / Access
  - **BETTER** – Homegrown Job-Specific Solutions
  - **BEST** - Tools, Systems, and Services that are designed specifically for this JOB (Many great solutions are available)



## When should I get started ?

- The actual PROCESS we've described is not terribly time intensive.
- What **IS** time intensive is **preparing to begin** the process.
  - Cleaning up current data source
  - Lining up the right resources
  - Implementing the right tools
  - Analysis and Planning of the DATA CONVERSION MAP
- If you get started NOW, and apply sufficient importance, priority, and resources, you should be in good shape.



.... When should I get started ?

● If you Procrastinate, you can expect ...

- Frustration / Rework
- Compromises
- Higher Costs
- Crowds and Lineups at the checkout (Ugh !!!)

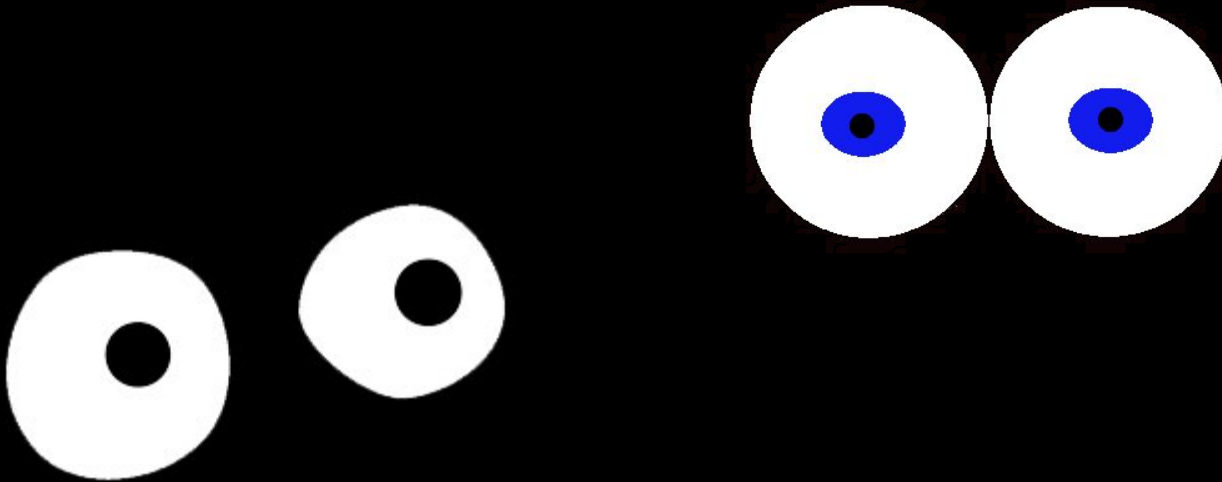
.... And worst of all ...



Potentially missing the Sunset ....

Not Being Ready when the SUN SETS on Legacy

will cost you Lost Sales and Lost Customers.





ARE YOU READY TO SUCCEED ?

Thank You

Questions .....

