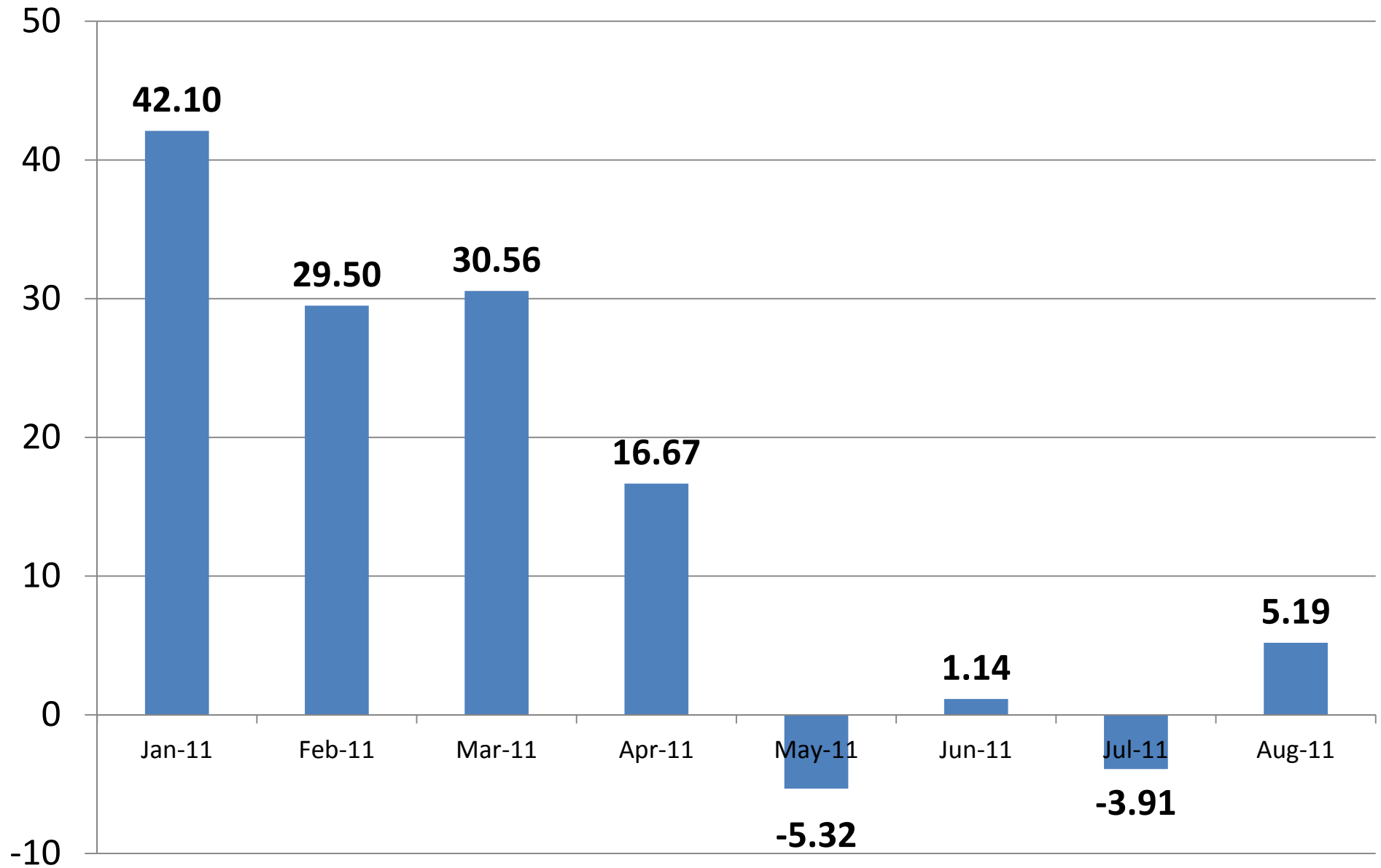


Reference # 1: AAIA/NU Business Confidence Index



Reference #2: AAIA/NU Economic Confidence Index

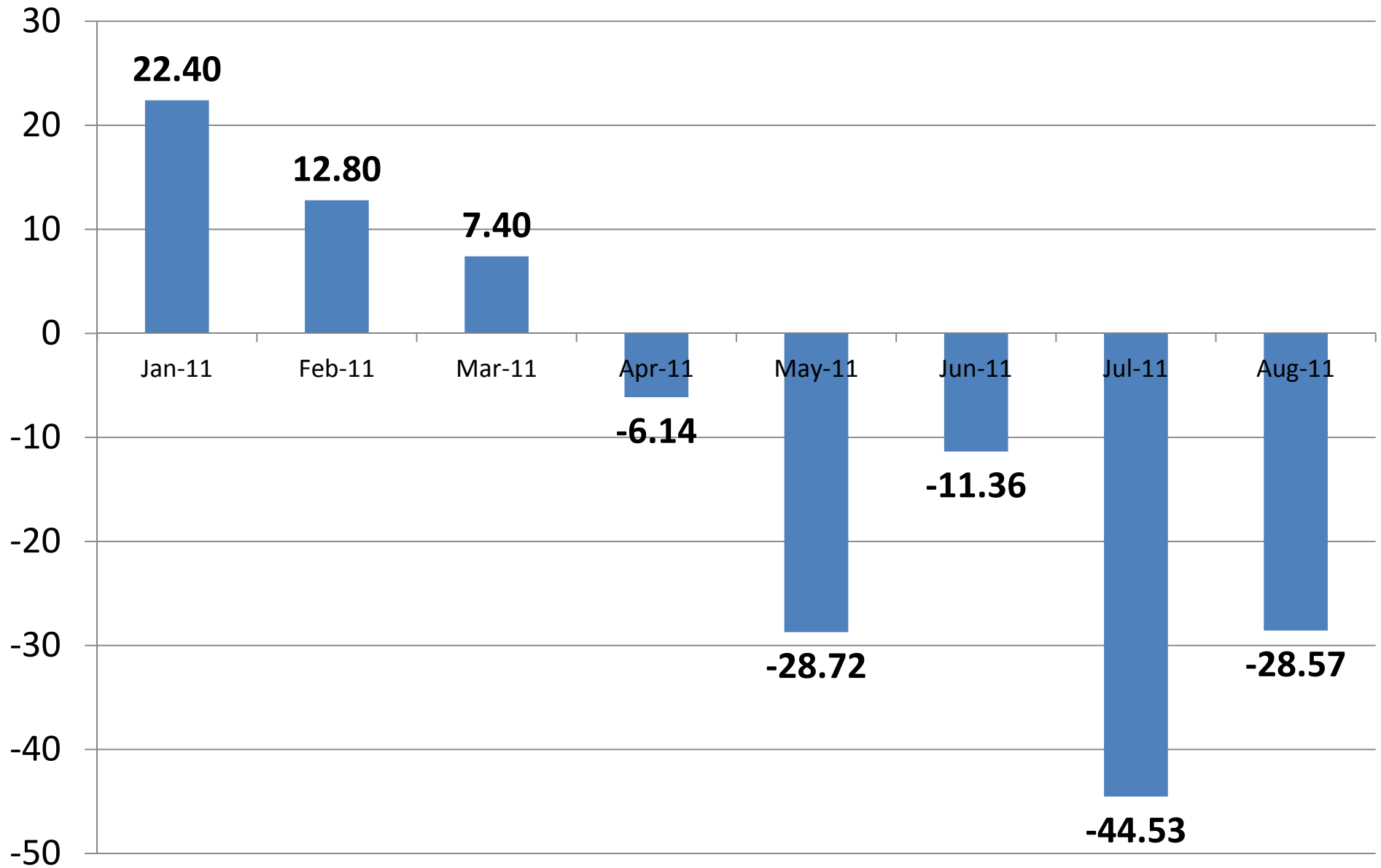


Table 1: AAIA/Northwood University Automotive Aftermarket Business Confidence Index	
Assessment	Numeric Range
Significantly Less Confident	-100 to -51
Slightly Less Confident	-50 to -1
No Change	0
Slightly More Confident	1 to 50
Significantly More Confident	51 to 100
Current Index Position	5.19

Reference #3

August Position:
5.19

August Position:
-28.57

Table 2: AAIA/Northwood University Automotive Aftermarket Economic Confidence Index	
Assessment	Numeric Range
Significantly Less Confident	-100 to -51
Slightly Less Confident	-50 to -1
No Change	0
Slightly More Confident	1 to 50
Significantly More Confident	51 to 100
Current Index Position	-28.57