

Chart 1: AAIA/NU Business Confidence Index

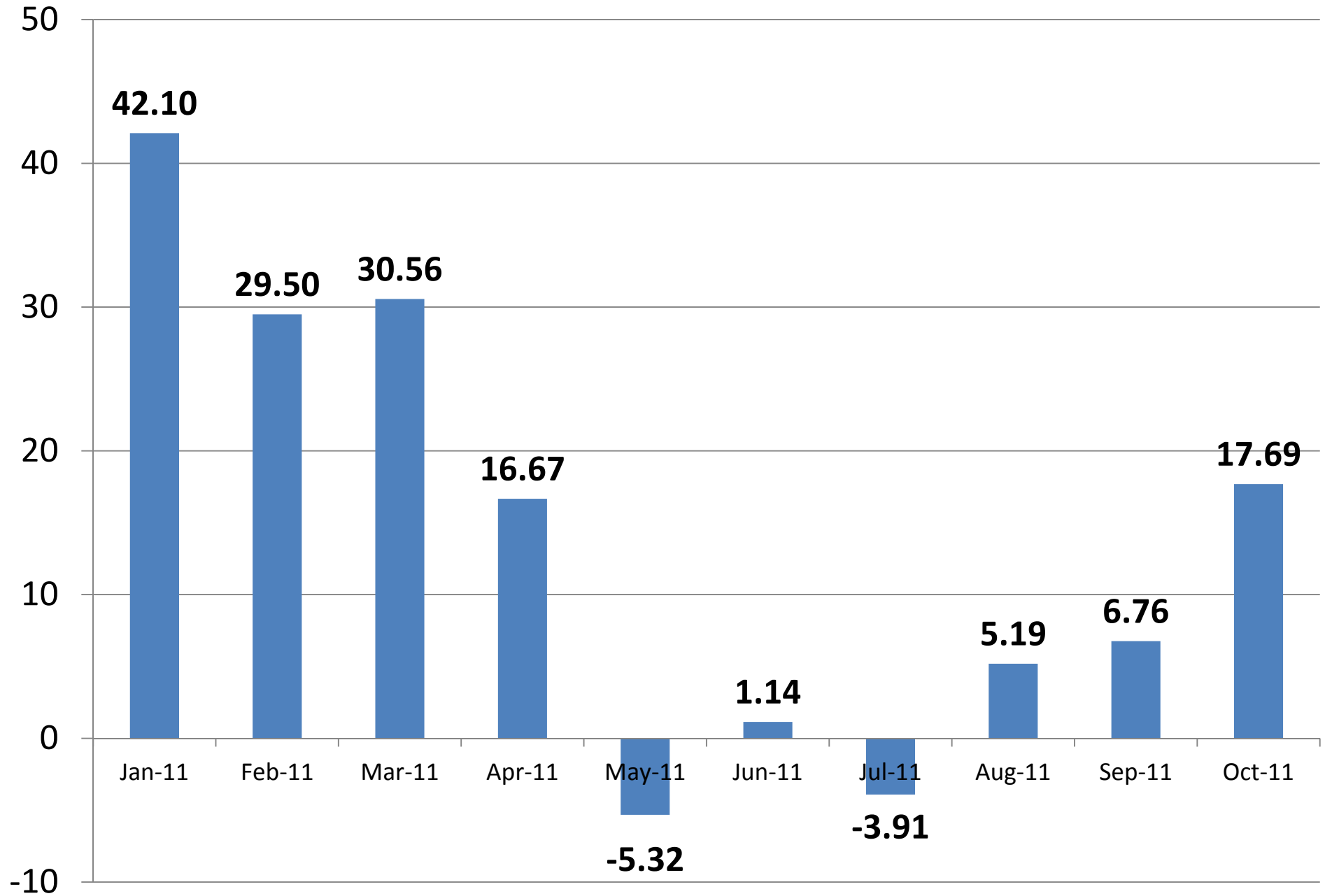


Chart 2: AAIA/NU Economic Confidence Index

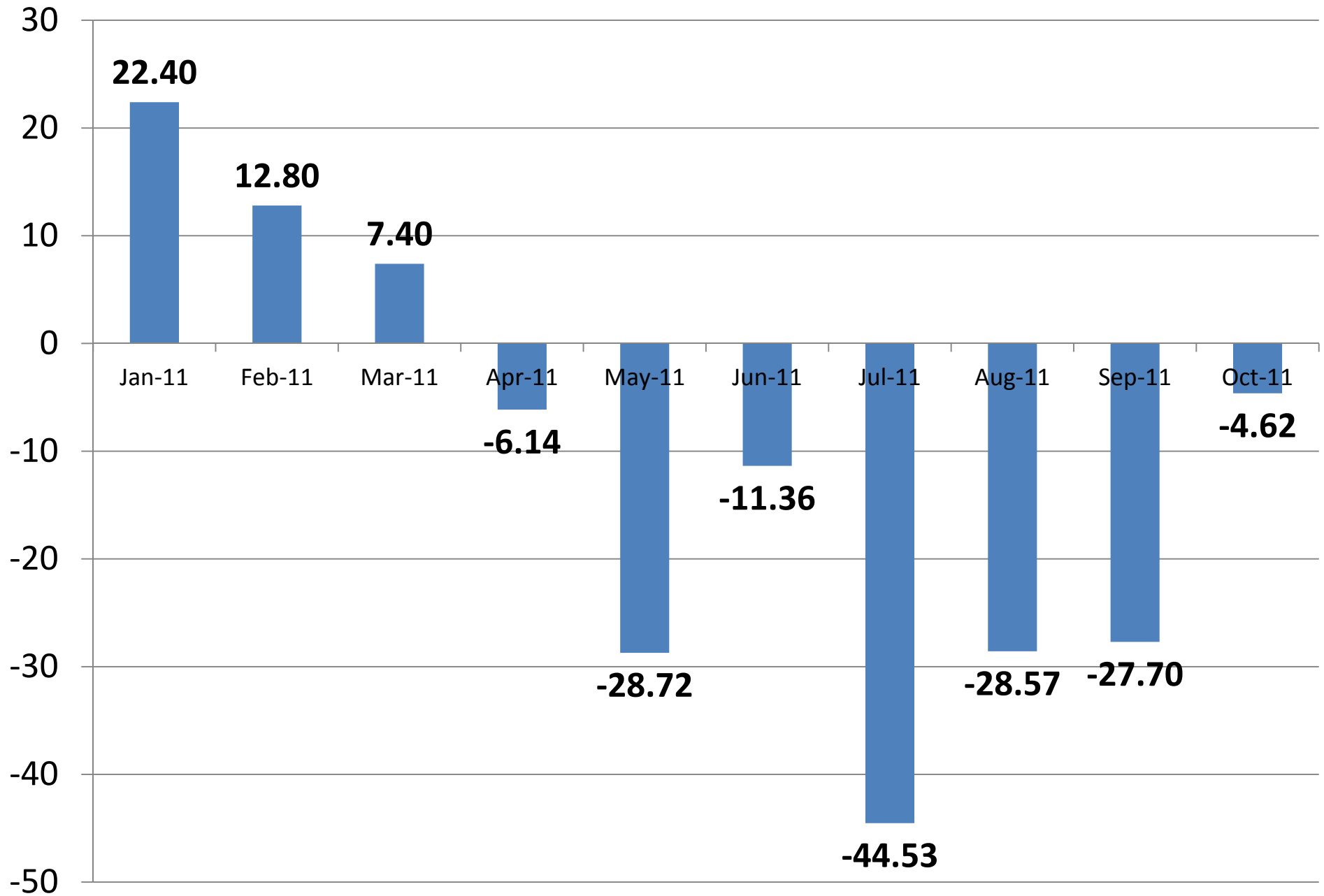


Table 1: AAIA/Northwood University Automotive Aftermarket Business Confidence Index	
Assessment	Numeric Range
Significantly Less Confident	-100 to -51
Slightly Less Confident	-50 to -1
No Change	0
Slightly More Confident	1 to 50
Significantly More Confident	51 to 100
Current Index Position	17.69

October Position:
17.69

October Position:
-4.62

Table 2: AAIA/Northwood University Automotive Aftermarket Economic Confidence Index	
Assessment	Numeric Range
Significantly Less Confident	-100 to -51
Slightly Less Confident	-50 to -1
No Change	0
Slightly More Confident	1 to 50
Significantly More Confident	51 to 100
Current Index Position	-4.62